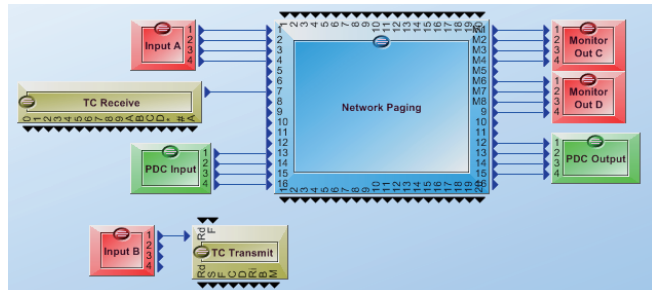


ATEiS Studio

Integrated operation Software



ATEiS Studio is a user-friendly graphic user interface designed for intuitive system setup. The PC-based software allows hardware update, full system configuration and generates the user interface for day-to-day system operation.

GRAPHICAL USER INTERFACE

ATEiS Studio allows complete PA/VA or audio systems incorporating a range of devices to be configured, monitored and controlled centrally from a single user interface. ATEiS Studio supports all IP-based products within the ATEiS product family such as IDA8 PA/VA system, LAP-G2T and ECS audio system. The software enables a comprehensive overview of the system and its virtual connections and also offers control and device configuration for IDA8 controllers and slave units, paging consoles and remotes such as PSS-AS, CD-16AS and URC-150AS devices.

DIAGNOSING

ATEiS Studio monitors, controls, logs and reports a range of events. The whole system configuration preset can be stored and reloaded at the press of a button. Users can tailor design the elements of the graphic user interface or control panels, as well as program the schedulers and events and create different user levels for security and management.

BUILDING

ATEiS Studio provides a complete set of tools and building blocks for real-time control and monitoring. Detailed information such as signal levels, loudspeaker impedance, pre-recorded messages, amplifier conditions and other parameters can be monitored in real-time.

A comprehensive library of tools, control and monitoring elements is provided along with the GUI, including items such as volume control faders, metering, high-level EQ, compression, limiting, auto-gain, noise sensing, mixing, shortcut buttons and display elements. Element behavior can be fully tailored to suit each application. Built-in file transfer software transfers both data and audio files from the PC to the network controller.

ACCESS LEVELS

Additional security can be added to the software with password-protected layers according to EN54-16. Multiple users can be created and assigned, each with a unique password and access to specific layers of the GUI.

FEATURES

- Runs on Windows
- Assignable access levels with rights management
- All system and unit parameters can be configured
- Easy navigation
- Drag & drop features
- Real-time monitored

DIAGNOSTIC AND LOGGING SOFTWARE

- Call, fault and general event logging
- On-line logging function
- Historical logging
- Event display priority can be changed
- Password-protected

FILE TRANSFER SOFTWARE

- PC-based application
- Supplied together with the network controller
- Creation of message sets
- Off-line configuration

ATEiS Studio Software Version

Version 1.X.X.XX for ATEiS Local-Net

Version 3.X.X.XX for ATEiS Global-Net

ATEiS global-net System

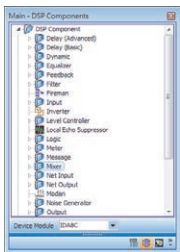
ATEiS global-net can be a network of more than one controller (matrix mode and switch mode) and a maximum up to 31 IDA8Sxx slave units (matrix mode and switch mode) in a local system.



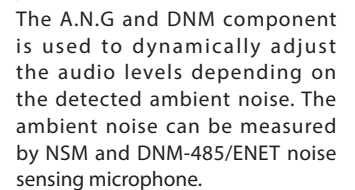
ATEiS Europe B.V.

Celsiusstraat 1 - 2652 XN Lansingerland (Rotterdam Region), Netherlands
Tel: +31 (0)10 2088690 | www.ateis-europe.com | info@ateis-europe.com

Digital Signal Processing



To design the system configuration including hardware connection, signal paths for each device, DSP components etc., simply Drag & Drop and items/components into the design window, providing easy-to-use and real-time modification.



The IDA8 system supports VoIP based on SIP protocol and Audio over IP applications by using PPM-IT5 paging console which makes an ideal and simple solution to intercom, 3rd party control and paging to IDA8 system over LAN/WAN.

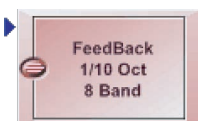


Some PA/VA applications require a huge number of zones for paging. It needs to be done by installing multiple ATEİS audio processors (matrix mode and switch mode) via ATEİS Net. The Network Paging component provides the capabilities of zones and each source can specify priority value.



This component mixes several source signals and route the signals to one output. The activation of channel(s) can be done manually/automatically by a signal and the priority.

The Telephone Card component is based as a traditional land line phone which manages the telephone calls for IDA8 system. The telephone card component consists of a TC transmit component and a TC receive component, providing dial, receive, detect the logic signal response of DTMF status.



The feedback component analyzes and detects the feedback source and adaptively attenuates the responsible frequency. There are 4 types of feedback components which are corresponded